



INTERSTATE STEEL STRUCTURES

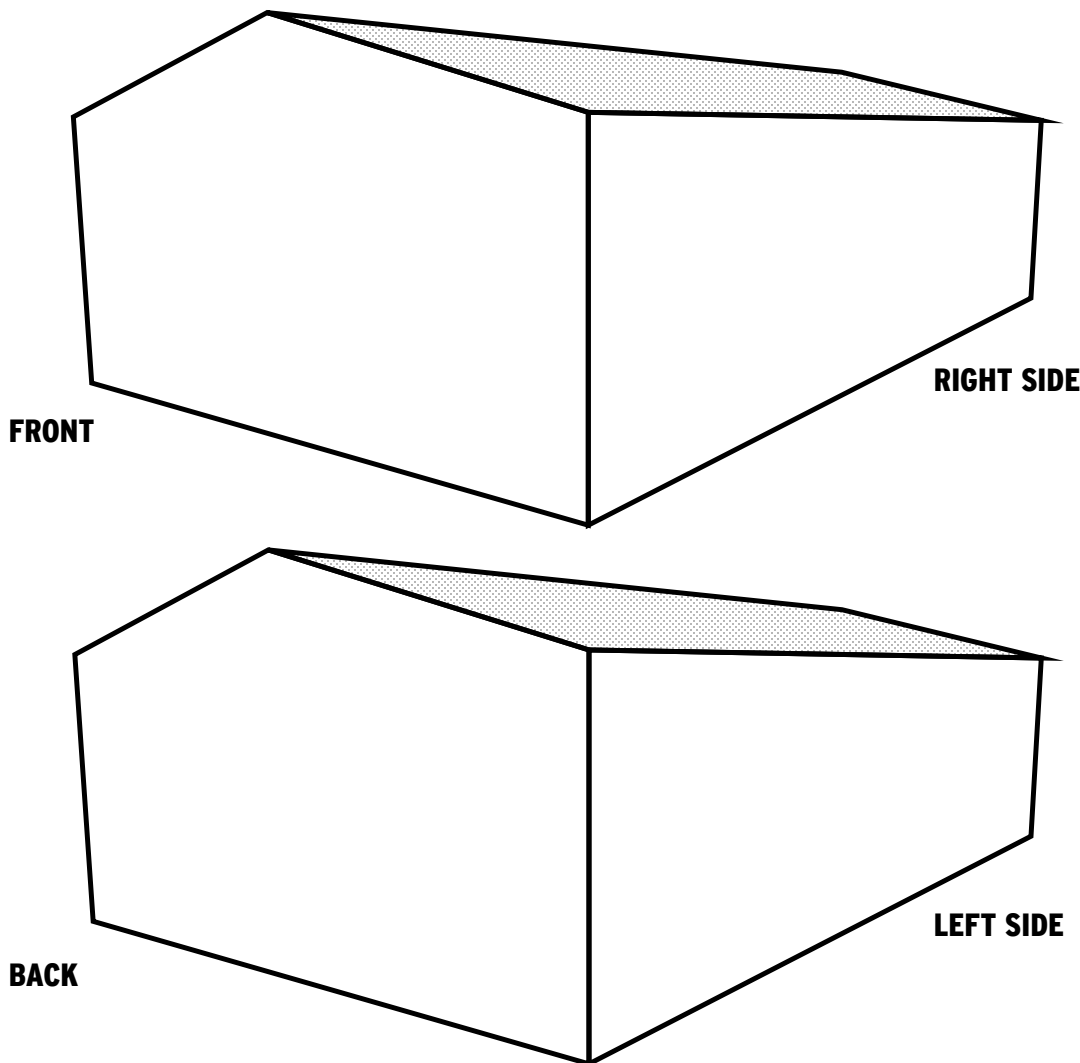
Corporate Office: 385 w Esplanade Ave San Jacinto, CA 92583

DOOR PLACEMENT FORM

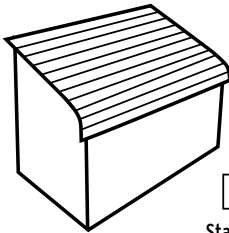
Name _____ City _____ ST _____

| | | | | | | | |
|------------|-------------|----------|---------------------|-------------------|-------------|-------------|----------|
| ROOF | Width _____ | X | Length _____ | Base Length _____ | Panel Gauge | 29 ga | 26 ga |
| LEG HEIGHT | _____ | Spacing | _____ (5' standard) | | | | |
| WALLS/ENDS | Horizontal | Vertical | | | COLOR: | Roof _____ | |
| Front End | Enclosed | Open | Gable | Back End | Enclosed | Open | Gable |
| Right Side | Enclosed | Open | 3' Strip | Left Side | Enclosed | Open | 3' Strip |
| | | | | | | Sides _____ | |
| | | | | | | Trim _____ | |

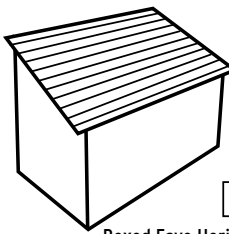
NOTE: Side Wall Placements of Walk-in Doors and of Windows are approximate and these openings will be placed adjacent the nearest Leg unless otherwise specified. ANY opening which crosses a load-bearing Leg will require a load-bearing Header at an additional cost.



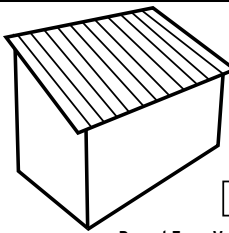
ROOF STYLE:


☐

Standard


☐

Boxed Eave Horizontal


☐

Boxed Eave Vertical

Construction Notes _____

DATE: ____/____/____ REP: _____ APPROVED: ____/____/____